

**PRICE BEAT
GUARANTEE**

Find a lower priced identical item &
We'll beat it by 10%
Excludes Bulk Pricing & Coupons
Price Includes Delivery

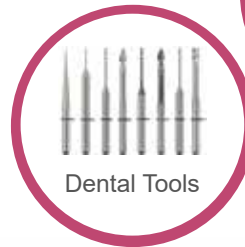
June - July
SPECIALS Prices expire July 31, 2023



**EXCEL
DENTAL**



**Digital
DENTISTRY**



We Install

Solutions

Training

By Dental Technicians

service

Satisfaction

Order Online

SUPPORT



Page 4

We'll mill & 3D print at minimum cost while your
equipment is being serviced

exceldentalshop.com
604-876-2600



FREE SHIPPING IN CANADA

Some conditions may apply

Einstein 3D Dental Printer by Desktop Health

Dynamic Layer Thickness Z (25-50-75-100-150µm)
Enhanced XY Resolution 65µm
Footprint 16" x 16" x 27.5"

SKU MIC-56-1000 **\$18,900**

Clarity, perfect fit and an impressively natural looking finish.
Up to 50% faster speed than its predecessor.
Versatility in materials,



LOWEST
PRICE
GUARANTEED

Dual Motion Bottle Roller

The Dual Motion Bottle Roller is an electrical appliance for mixing polymers, resins, viscous materials, and liquid-solid suspensions.
SKU ACC-26-1000 **\$860.20**



PCA 2000 curing unit

With 360° irradiation and controlled heating, the PCA 2000 can optimize your productivity, offering three settings. Two settings are for standard use to finalize small and large jobs, and a third called "Custom" allows you to create a customized program for curing your resin. Up to seven personalized custom settings can be stored for ease of use.
SKU PCA 2000 **\$2540**



PWA 2000 washing unit

The Parts Washing Apparatus is a convenient tool to assist in cleaning any uncured resin from 3D printed models. The convenient removable basket allows for ease of use when dipping or extracting objects from the tank.
SKU ACC-22-2000 **\$2250**



Available in a Range of Colors to Match Individual Patient Smiles
Introducing Flexcera™, a new resin for the fabrication of beautiful, functional dentures with ceramic-like strength. Available as Flexcera™ Smile and Flexcera™ Base and formulated exclusively for use with EnvisionTEC™ and Desktop Health™ 3D printers.



Flexcera™ Smile Resins (teeth)	0.5 kg	1 kg	Flexcera™ Base Resins (gums)	1 kg
Ultra+ Bleach	\$610.80	\$960.10	Light Pink	\$610.80
Ultra+ A1	\$610.80	\$960.10	Dark Pink	\$610.80
Ultra+ A2	\$610.80	\$960.10	Dark Meharry	\$610.80
Ultra+ A3	\$610.80	\$960.10	Medium Pink	\$610.80
Ultra+ A3.5	\$610.80	\$960.10	Original Pink	\$610.80
Ultra+ B1	\$610.80	\$960.10	Model Resins	1 kg
Bleach	-	\$810.25	Model Z Beige	\$154
A1	-	\$810.25	Model X Beige	\$245
B1	-	\$810.25	Model X Grey	\$245
A2	-	\$810.25	Implant Resins	1 kg
A3	-	\$810.25	E-Guide	\$460
A3.5	-	\$810.25	E-Gum	\$420
			E-Tray	\$369

ACKURETTA

SOL 3D Dental Printer

SOL is an LCD 3D printer with a monochromatic print screen and is specifically designed for same-day chairside digital dentistry.

54 LEDs calibrated to be completely uniform

150+ Prevalidated Materials

49-micron

Pixel-size

INCLUDES

1 x Extra Print Screens

1 x Extra Vat

1 x Ethernet Cable

1 x Wi-Fi Dongle

2 - year Warranty



Sol **\$6,999**

SOL LCD Dental 3D Printer Bundle

SOL LCD 3D Printer

2-Year Standard Warranty

Alpha 3D Software: Quarterly Updates & Precalibrated

Resin Profiles Included

Resin Starter Kit: 2x CURO Model500g

Cleani Ultrasonic Dual-Tank Cleaning Unit

Curie UV Curing Unit – Approved for CLII Dental Applications

Spare Vat and Print Screen

Wi-Fi Dongle

Ethernet Cable

4 hours online training

CLEANI

CLEANI is designed with dual tanks for a two-stage cleaning process that allows for heavy and fine washes.

- Save 50% alcohol consumption in the cleaning process

- Clean 90% Resin Residue with less time and effort

- A seamless move from the printer to the washer

- Clean both the build platform and prints in one move

- Dual tanks for an optimal 2-stage cleaning solution

- Built to last anti-abrasion base.

SKU KT200180101 **\$944**

curie

The most versatile UV oven for 3D printing equipped with a sophisticated UV-light source management system to enable users to do more in less time and space.

- Compact & Efficient

- Easy-To-Use

- Smartest UV Oven

SKU KT200180101 **\$2035**

UV-BOX

The Ackuretta UV Box is a compact curing oven lined with long-life ultraviolet LED lights for enhanced curing performance.

SKU KT200040101 **\$660**



LOWEST
PRICE
GUARANTEED

\$9,999



CURO Resins

CURO Model	0.5 kg	1 kg
Element Beige	\$110	-
Curo Gingiva	\$260	\$490
Curo Tray Resin	-	\$340
CURO Soft Splint	\$280.10	-





KeyModel Ultra™

Ultra-fast printing
Thermoforming quick-release agent
Flawless detail
Multiple available colors
Carve-able without chipping
Pairs perfectly with KeyMask™

	Ivory	Light Grey	Price	
1 kg	4220009	4220010	\$120	2 or 3 \$110 4 or more \$105
4 kg	4240009	4240010	\$410	

KeyModel

Crown, bridge, and implant models
Orthodontic clear aligner models
Diagnostic modeling
Colored for easy visibility of margins and tooth anatomy
Carvable without chipping
Pairs perfectly with KeyMask™

	Beige	Price
1 kg	4220006	\$199.99

KeyOrthoModel

KeyOrthoModel is designed for high-speed and accurate prints. Perfect for thermoforming aligners and orthodontic devices.

	Gray	Price
1 kg	4220003	\$220.10

KeyMill™ Denture Base Disc

KeyOrthoModel is designed for high-speed and accurate prints. Perfect for thermoforming aligners and orthodontic devices.

High impact denture, less brittle and more fracture resistant than PMMA Denture discs

Highly aesthetic

Minimal finishing required

Compatible with 4-axis and 5-axis milling machines such as VHF, Roland, Imes-Icore, and more

KeySplint

KeySplint Soft is fully biocompatible, and is in compliance with international medical device regulations and standards. Its robust formulation has three years of guaranteed shelf life, is color stable, and is validated in multiple open-source printers. No other dental splint resin can deliver the quality and performance of KeySplint Soft.

Biocompatible
Transparent
Polishable
Stain-resistant

	Transparent	Clear	Price	
Soft	4220005	4220161	\$529.99	2 or 3 \$515.00 4 or more \$499.99
Hard	4220004		\$529.99	

Keytray

KeyCast is compatible with rapid burnout and gradual temperature ramp workflows, with no residual ash.

KeyCast is used with chrome, cobalt, gold, and silver

Low shrinkage formula controls thermal expansion to yield pore-free and accurate castings

	Transparent	Price
1 kg	4220007	\$330.20
0.5 kg	4200007	\$210.10

KeyGuide

KeyGuide is ideal for fabricating transparent surgical guides, allowing doctors to place implants at a precise angle and depth. The print is strong and high-precision for optimal placement and drilling during surgery

	Transparent	Price
1 kg	4220001	\$310.20
0.5 kg	4200001	\$219.10

KeyCast

KeyCast is compatible with rapid burnout and gradual temperature ramp workflows, with no residual ash.

KeyCast is used with chrome, cobalt, gold, and silver

Low shrinkage formula controls thermal expansion to yield pore-free and accurate castings

	Transparent	Price
1 kg	4220000	\$329
0.5 kg	4200000	\$220.10

KeyMask

A flexible yet firm gingival mask that simulates the look and feel of gum tissue

Perfect for digital restoration planning
Easily trimmed to create a proper emergence profile or sculpted for proper pontic shape

	Pink	Price
0.5 kg	4220002	\$220.10

KeyOrtho IBT

KeyOrtho IBT combines the strength and precision to accurately set brackets, with the flexibility and non-stick formula needed for easy release.

Biocompatible, tasteless, and odorless, KeyOrtho IBT is ideal for manufacturing indirect bonding trays. Drastically reduce chair time and increase patient comfort during the orthodontic bracket setting process.

	Gray	Price
1 kg	4220008	\$480



VeriCast OS Resin

VeriCast OS prints accurate and detailed crowns, bridges, substructures, and RPD frameworks, is durable, and burns out cleanly. It's ideal for investment casting and ceramic pressing, and its red color makes it easy to see detail.

	Gray	Price
1 kg	71179	\$499.99

VeriModel OS Golden Brown Resin

The latest addition to its VeriBuild print resin family. The methacrylate-based 3D print resin is made especially for dental models and removable dies. It is compatible with both 385nm and 405nm 3D printers and is ideal for most open-system DLP, LCD, and SLA printers.

	Golden Brown	Price
1 kg	71172	\$268.40

VeriModel OS Ivory Resin

The methacrylate-based 3D print resin made especially for dental models and removable dies. Provide high detail resolution, sharp margins, low shrinkage and long-lasting toughness. Natural ivory color gives a visual contrast to waxes but doesn't influence the color of tooth-colored restorative materials.

	Ivory	Price
1 kg	71177	\$268.40

VeriGuide OS

Whip Mix introduces VeriGuide OS, a Class I resin material developed for the production of high precision surgical guides for use in dental implant surgery. The new material is formulated for 3D-printing systems (DLP, SLA, and LCD) at both 385 nm and 405 nm.

	Gray	Price
1 kg	71175	\$384.20

VeriTray Resin

Methacrylate based resin for stereolithography systems with solid state laser and DLP systems ($\lambda \leq 385\text{nm}$). Ideal for custom tray impressions.

	Ivory	Price
1 kg	71084	\$384.20

PRICE BEAT GUARANTEE

Find a lower priced identical item & We'll beat it by 10%
Excludes Bulk Pricing & Coupons
Price Includes Delivery

	Original	Light Reddish Pink	
25 mm	1009310	1009312	\$79.20
30 mm	1009311	1009313	\$91.50

DWX-53DC

Unattended, Intelligent, 24-Hour Productivity
Automatic-Disc Changer
New Fully-Integrated Webcam
5-Axis Milling
Intelligent Tool Control

~~\$56,800~~

\$47,999

Free BOFA dust collector
FREE SHIPPING
Training included

PRICE BEAT GUARANTEE
Find a lower priced identical item &
We'll beat it by 10%
Excludes Bulk Pricing & Coupons
Price Includes Delivery



We install, train, and service
Excel Dental will mill at minimum cost while your equipment is being serviced



DWX-52D Dry 5-Axis Dental Milling Machine

Efficient Milling Set-Up
Increased Milling Capabilities
Intelligent Tool Control
5-Axis Milling
User Replaceable Spindle
A Clean, Precise and Flexible Milling Solution
Free Shipping
DWX-52D \$29,900 (training included)



DWX-52DCi Dry Dental Milling Machine with Automatic Disc Changer

Automatic Disc Changer (ADC)
Automatic Tool Changer (ATC)
Intelligent Tool Control
5-Axis Milling
Automatic Air Pressure Control
User Replaceable Spindle
A Clean, Precise and Flexible Milling
Two-year warranty + Free BOFA Extractor & Free Shipping
DWX-52D \$36,750 (training included)



DWX-42W Wet Dental Mill - Chairside Milling

50% LESS Air Pressure Needed
Designed and built by DGS SHAPE— using over 35-years
of cutting-edge engineering excellence
A robust, all-metal spindle offers solid performance and
maximum efficiency
Doesn't require a high-volume compressor— perfect for
in-clinic labs
Free 2-month tool subscription & Free Shipping
CAM Software included
DWX-52D \$33,800 (training included)

Milling Burs

Single \$35
5+ @ \$31
10+ @ \$27

Promos Ending Friday, June 30th, 2023

Zirconia Milling Burs Roland Compatible DC			
2.0 mm ZirconiaDC20	1.0 mm ZirconiaDC10	0.8 mm ZirconiaDC08	0.6 mm ZirconiaDC06

Metal Milling Bur Roland Compatible DC		
3.0 mm MetalD3x3.0	2.0 mm MetalD3X2.0	1.0 mm Ball-end MetalD31.0

Emax Milling Bur Roland Compatible DC		
2.5 mm EmaxD3X2.5	1.0 mm EmaxD3X1.0	0.6 mm EmaxD3X0.6

PMMA Milling Bur Roland Compatible DC				
2.0 mm EmaxD3X2.5	1.0 mm EmaxD3X1.0	0.8 mm EmaxD3X1.0	0.6 mm EmaxD3X0.6	0.5 mm EmaxD3X0.6

Zirconia Milling Bur Dentsply Sirona Compatible		
2.5 mm ZirconiaDC D3X2.5	1.0 mm ZirconiaDC D3X1.0	0.5 mm ZirconiaDC D3X0.5

Zirconia Milling Bur WIELAND Compatible		
2.5 mm Zirconia DC D3X2.5	1.0 mm ZirconiaDC D3X1.0	0.5 mm ZirconiaDC D3X0.7

FREE SHIPPING IN CANADA

Explore Functional

- Veneer, Inlay/Onlay, Monolithic Crown Anterior, Monolithic Crown Posterior, Bridge
- UPCERA Explore Functional is a 5 layers dental multilayer with gradient translucency.
- 16 Vita shades A1 to D4
- Bleach shades BL1 to BL4
- Strength 1027 MPa to 1300MPa
- Translucency 43% to 46.6%

Explore Esthetic

- Veneer, inlay, onlay, single crown, bridge up to three units
- Excellent quality and natural esthetic result
- 16 Vita shades A1 to D4
- Bleach shades BL1 to BL4
- Gradient technology multilayer
- Strength 727 Mpa to 1000 Mpa
- Translucency 47% to 48.8%



14mm	16mm	20mm
Functional	Functional	Functional
Esthetic	Esthetic	Esthetic
\$150	\$160	\$170



FREE SHIPPING IN CANADA

Grinding Tools for Lab Side Materials

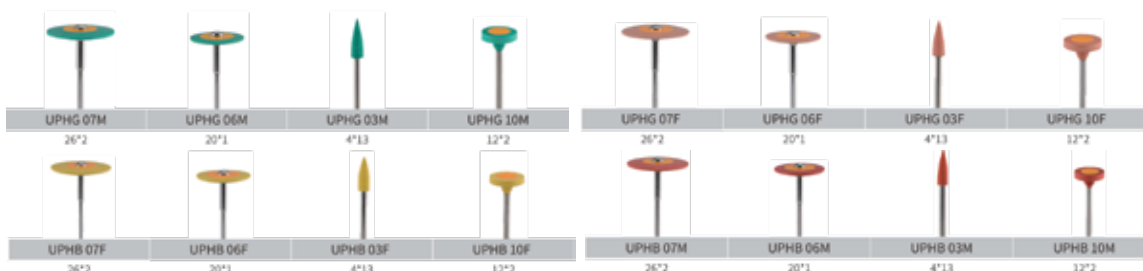
Each **\$19.99**



Polishing Tools for Lab Side Materials

Each **\$19.99**

Polishing Tools for Zirconia
Two steps to get fine polishing
No polishing paste needed
Polish without heat development
No tiny hidden cracks
No bad smell when polishing
Longer service life



MonoTrac Articulation Model Performance



V2 Straight Quad Complete
SKU V2QC pk/100 **\$220.10**



V2 Radius Quad Complete
SKU V2RC pk/100 **\$220.10**



Super V2 Anterior Articulator 100/pk
SKU V2AC pk/100 **\$248.71**



Super V2 Full Arch
SKU V2FC pk/100 **\$239.10**

3D Articulator Slotted (Sets of 100)

Detachable, Dependable
-Easy to scan
-Easy to adjust bite
-Easy to pack



Blue	Black	Price
9024-02	9024-01	\$34.80

Articulator Slotted (Sets of 100)

- Economical
- Lightweight
- Pre-Assembled
- Heavy Duty Plastic



Gray	Black	Price
8024-12	8024-01	\$30.15

Articulator Black Flat Back (Sets of 100)

- Economical
- Lightweight



Black	Price
8024-08	\$34.05

Ceramic Firing Tray w/10 Metal Pins & Sleeves

	Price /Ea
8034-01	\$69.98



Pillow Box is a new crown box made of clear plastic with two clear holding membranes. When a single crown, or a three- unit bridge or a six- unit bridge or more is placed in the box, it appears as it is floating in air, even as it is held firmly in place by the membranes.
The Boss Pillow Box is perfect for shipping all Ceramic Crowns or Porcelain Veneers.



Available Sizes	SKU	Price/Ea
1X1X1 inch	8070-01	\$0.90
2X2X1 inch	8070-02	\$0.95
3X3X1.5 inch	8070-03	\$1.15

Model and Denture Shipping Boxes

	Price /Ea
530-01	\$2.20



Direct Wax Sprues

Size	SKU	Price
8 Gauge 500/box	8029-02	\$39.95
10 Gauge 250/box	8029-04	\$23.90

Indirect Wax Sprues

Size	SKU	Price
4 Gauge 250/box	8029-11	\$61.45
6 Gauge 250/box	8029-13	\$61.45

Wax Buttons

Size	SKU	Price
100/box	8029-14	\$22.60

Base Molds

Made of high quality PVC material
Slotted for disposable articulators
Durable and long lasting
Easy to clean (Rinse & Dry)
Ribbed bottom to prevent suction to wet counters



Small Model Base	8026-02	\$11.99
Medium Model Base	8026-03	\$11.99
Large Model Base	8026-04	\$11.99
Left Quadrant Base	8026-05	\$11.99
Right Quadrant Base	8026-06	\$11.99

Die Cutter & Processing Station / Table Saw / Lathe

New Ergonomic Model Processing Station - 3 cutting modes: table saw, plunge cut, and side cut
SKU APS **\$990.10**



Model Dehydrator

Used for drying model prior to sectioning, for easy debris removal.
The dehydrator is an important tool if using the Monotrac Processing station (table saw), or a handpiece disk. Dust debris will stick to the interior of the die cone holes without the drying process and therefore prevent the dies from fully seating back onto the base. Section the model while it is still warm.
SKU ADH **\$149.20**



Silicone Mold Release Spray

Stoner food grade silicone mold release spray facilitates easier removal of Monotrac models from their bases.
SKU ASIL **\$30.80**



Dam-it Putty Block - 4 oz

Dam-it putty block, reusable putty for boxing impressions & build up of sidewalls prior to pouring die material. Will not stick to impression or dies. Holds its shape. Will not slump. Safe. Saves time, easy to use. 4 oz.
SKU ADM **\$36.10**



Metrodent

Metro Modelling Wax No. 2

Weight	SKU	Price
500 g	Wax #2	\$18.10
2500 g	2WAX2.5	\$80.15



Wax Bite Blocks 48/Pk

SKU WAXB48 \$21.10





GC FUJIROCK® EP

Synthetic Die & Model Material

Type IV die stone ideal for all kinds of prosthetics, with high precision, outstanding edge hardness and high pressure stability.

Easy to mix and flows well, yet runs less from the impression when pouring

Exhibits superior handling characteristics

Low setting expansion provides accurate models with smooth surfaces (0.08%)

Buy 3, get 1 free!

	Golden Brown	Yellow	Price
26.4 lb	890226	890365	\$105
50 lb	315019	-	\$142.50



COECAL™ Type III Dental Stone

Is a hard, quick setting, accurate laboratory stone used for study models, working models and flasking procedures.

Minimum processing change

	Buff	White	Price
50 lb	310150	310250	\$74.40



COE-Comfort™ Self-Cure Chairside

Edentulous Tissue Conditioner – Powder

COE-Comfort™ is a self-curing, chairside edentulous tissue conditioner used to restore sound form and condition to the underlying tissue.

Acting as a cushion to the tissue, a lining of COE-Comfort allows the denture-bearing tissue to recover and return to a normal, healthy condition.

- Easy to mix and apply
- Can be used as a functional impression material
- Contains zinc undecylenate to minimize odor and fungal growth



		Price
6 oz	341002	\$174.20
5 lb	341004	\$890.20

COE-Comfort™ Self-Cure Chairside

Edentulous Tissue Conditioner – Professional Package

SKU 341001 ~~\$245.00~~ **\$210.00**
Save \$35



COE-Soft™ Resilient Denture Liner – Professional Package

COE-Soft™ is a resilient, self-cure reline material used when the patient requires a soft, temporary liner in upper or lower dentures.

Polymerizes in or out of the mouth in approximately 15 minutes and will normally last about 3 months.

- No monomers
- Soft lining
- Contains zinc undecylenate
- Mixes in 30 seconds
- For chairside use

SKU 344011 ~~\$235.10~~ **\$205.10**
Save \$30



Kooliner™ Hard Denture Reline Material – Professional Package

Kooliner™ is a chairside, hard denture reline material that has been formulated for reduced exothermic heat. It can completely self-cure in the patient's mouth in approximately 10 minutes.

- Can be cured in mouth, minimizes distortion and ensures fit of denture
- Low exothermic heat, 110°F at 2 mm thickness – more patient comfort
- Dense, stable and colorfast
- Easy to finish and polish
- Can be used to extend denture borders and for posterior palatal seal

SKU 345001 ~~\$156.45~~ **\$141.45**
Save \$15



COE® Tray Cleaner, 575 g Bottle

Cleans in less than 15 minutes

Dustless, bacteriostatic

Mild on skin; does not contain phosphate

SKU 250010 **\$59.65**



Pattern Resin™ LS Self-Curing Acrylic Die Material – 1:1 Package

Pattern Resin™ LS self-curing, acrylic die material is a general purpose acrylic resin used for making patterns for fabricating copings, post and core build-ups, lingual and palatal bars, implant attachments, adhesion bridges, clasps, telescoping crowns and certain pre-soldering techniques.

- Formulated to provide a perfect fit
- Ideal for dentists and laboratories who perform difficult restorations
- Sets quickly with minimal shrinkage
- Allows both direct and indirect pattern making
- Leaves no residue after burnout

SKU 335201 **\$118.80**



Metal Primer II – 5 ml Bottle

Metal Primer II is an adhesive for bonding dental acrylics and composite resins to all types of metal. This primer has adhesion-promoting (MEPS thiophosphoric methacrylate) molecular structure, which penetrates the mechanical and chemical resin bond.

- One step resin to metal bonding agent
- Can be used with all dental alloys

SKU 000554 **\$148.85**



Multi-Sep

Seperating Medium 300ml

SKU 343694 **\$109.95**



Nature-Cryl Super Hi Impact – 1:1 Pack Original

High impact denture resin with innovative polymer chemistry that allows extended working time and a 20-minute boiling water cure.

This material complies with the requirements of ISO 1567 Type 1 Class 1 denture base material, which exceeds the ISO 1567 threshold for high impact strength. Permits computer-assisted shade matching, which provides aesthetically accurate upper and lower dentures, partial dentures, relines and repairs with all NATURE-CRYL system shades.

SKU 349815 **\$84.80**



GC Optiglaze™

GC Optiglaze™ is a nano-filled, light-cured protective coating applied directly to provide an aesthetic, glossy surface on indirect composite restoration, artificial teeth, removable dentures, temporary crowns and individual acrylic trays.

- Single dispersion nano-filler technology
- 3-minute light cure with GC Labolight LV-III
- Easy to handle and saves time
- Very thin coating layer (25-50 µm) with no influence on restoration color
- High resistance against wear and discoloration
- Superior bond durability for a longlasting gloss

SKU 002613 **\$84.20**



The Light Cordless LED Curing Light – Operator

The Light Cordless LED Curing Light meets all standard operator light curing needs.

- Operates from 440 nm to 490 nm
- 330° rotating head allows better access positioning
- Slim head configuration gives better intraoral access
- Sturdy design that is built to last
- Long-lasting lithium-ion battery can be fully charged in 180 minutes
- Easy to read OLED screen
- Disposable cover sleeves reduce procedure time
- Focused light provides uniform light direction, generates better depth-of-cure and dramatically reduces eye fatigue
- Curing scope can be adjusted to match distance from restorative material to focused lens
- 4 preset curing modes: high, low, soft start and pulse

SKU 402400 ~~\$1,290.00~~ **\$1190.00**
Save \$100





Initial® LiSi CAD/CAM Block – Size 14, 5/Pkg \$189.70

Initial® LiSi CAD/CAM Block is a fully crystallized lithium disilicate block that delivers optimal physical properties without firing.

- Reduced processing time – just mill, polish and place
- High wear resistance, smooth margins and highly esthetic final results
- Offers a natural opalescence in any light



	012927	012928	012929	012930	012931	012932	012933	012934
SHADE	A1 HT	A2 HT	A3 HT	B1 HT	A1 LT	A2 LT	A3 LT	B1 LT

GC Initial™ LiSi Press – Ingot, 3 g, 5/Pkg

GC Initial™ LiSi Press is a lithium disilicate glass ceramic with HDM technology.

It has unsurpassed flexural strength (450 MPa) and unparalleled esthetics.

Rich, warm and bright colors with excellent fluorescence

Virtually no reaction layer when divested

Cleaner presses

Low abrasion and wear resistant

Each **\$139.95 Buy 4, get 1 free!**

010340 MO-0
010341 MO-1
010342 MO-2
010328 MT-A1
010329 MT-A2
010330 MT-A3
012827 MT-A3.5
012828 MT-A4
010327 MT-B0
012826 MT-B0+
010326 MT-B00
010331 MT-B1
010332 MT-B2
012829 MT-B3
012830 MT-B4
010333 MT-C1
010334 MT-C2
012831 MT-C3
012832 MT-C4
010335 MT-D2
012833 MT-D3
012834 MT-D4

010336 LT-A
012838 LT-A1
012839 LT-A2
012840 LT-A3
012841 LT-A3.5
012842 LT-A4
010337 LT-B
012837 LT-B0
012835 LT-B00
012843 LT-B1
012844 LT-B2
012836 LT-B0+
012845 LT-B3
012846 LT-B4
010338 LT-C
012847 LT-C1
012848 LT-C2
012849 LT-C3
012850 LT-C4
010339 LT-D
012852 LT-D3
012853 LT-D4
012851 LT-D2

010321 HT-BLE
012825 HT-BLE+
010322 HT-E57
010323 HT-E58
010324 HT-E59
010325 HT-E60
010320 HT-EXW



GC Initial Zr

is specifically adapted for use with high strength zirconium frameworks, making them ideal for the fabrication of delicate substructures such as bridges

- Exactly cross-matched coefficients of thermal expansion
- Superior esthetics on high tensile strength zirconium frameworks
- Very good wettability
- Firing temperature of 810°C and short cooling times
- Excellent adhesion and high bio compatibility

Initial ZR Basic Kit Ea

Contains: Frame Modifier 3, Dentin 16, Opaqus Dentin Modifier 2, Enamel 4, Enamel Intensive 4, Clear Fluorescence, Translucent 2, Translucent Modifier 5, Glaze, INCISIO, Glaze Liquid (25 mL) and Modeling Liquid (50 mL). Shade Guides are not included

877010....\$2140

Initial ZR Advanced Kit Ea

Contains: Inside 11, Cervical Translucent 5, Enamel Occlusal 3, Enamel Opal 4, Shoulder Transparent 7, Shoulder Opaque 3, Fluo-Dentin 3, Gingival Universal, Correction powder, Modeling Liquid (50 mL) and Shoulder Liquid (50 mL). Shade Guides are not included.

877011....\$2140

Initial ZR Entrance Kit Ea

Contains: Frame Modifier (FM-2); Dentin (DA3); Enamel (E-58 and E-59); Inside (IN-44); Clear Fluorescence (CL-F); Fluo-Dentin (FD-93); Enamel Opal (EOP2); Glaze Powder (10 g); Glaze Liquid (25 mL) and Modeling Liquid (50 mL).

877038....\$499



GC LiSi PressVes

Is a phosphate bonded investment for press ceramic techniques offering you an easier, faster and safer process.

Powder Contains: Sixty packages (100 g each)	Liquid (900 mL)	SR (Surface Refining) Liquid (30 mL)
901424	901425	901426
\$240	\$40	\$136.80



Bellavest SH

Shock-Heat, rapidly or conventionally heatable precision casting investment material for crowns and bridges, also made of pressed ceramics

- Graphite-free, phosphate-bonded precision casting investment material
- Easy to process with the special mixing liquid BegoSol® HE
- Great expansion control
- Smooth, creamy consistency
- Long processing time of 5 minutes
- Extremely smooth casting surfaces
- Hardens with firm edges and can still be easily deflasked
- Guaranteed shelf life of two years in sealed bag
- Portion bags easy to tear open

Bellavest SH Pwd Only 144x90g SKU 54257 **\$276.20**

Begosol HE 1L PINK SKU 51095 **\$44.10**



Wirovest plus

Enhanced version of Wirovest® partial denture investment material

- Wirovest®plus offers the benefits of extended working time and universal suitability for duplication within all conceivable areas of indication
- Wirovest®plus is a partial denture investment material which achieves excellent accuracy of fit with a wide range of duplication techniques and working parameters
- Extended working time enables fabrication of several models and moulds in a single working step, thus saving time

Wirovest plus 45 x 400 g = 18 kg SKU 54821 **\$204.09**

WiroLyt 1L SKU 52460 **\$66.80**





BUY 6 GET 1
FREE



Item / Weight	Color / Set	Item No	Product Description	Setting Time	Price
ResinRock Die StonesType 4 33 lb	Blue	330010	ResinRock, a new, resin fortified die stone produces models of the highest quality. The unique blend of synthetic resin and alpha gypsum results in improved surface smoothness and increased resistance to abrasion. Resin fortified, low expansion die stone gypsum. Scannable	10 minutes	\$129.80
	Ivory	330014			
Prima-Rock Die StonesType 4 33lb	Yellow	330037	Prima-Rock has the highest compressive strength of any Whip Mix die material. Vacuum spatulation provides a smooth mix which flows readily. High strength die stone gypsum	12 minutes	\$99.10
	Violet	330036			
Silky-Rock Die StonesType 4 33lb	White	330027	Silky-Rock is characterized by exceptional hardness and density throughout, and an unusual "silky-smooth" pouring quality that makes it flow freely into any type of impression. It works well with all types of impression materials. Low expansion die stone gypsum	10 minutes	\$69.80
	Violet	330026			
Buff Stone Model Stones Type 3 33lb	Buff	330051	An economically priced type 3 gypsum for all general purpose lab uses. Buff stone features an extended working time which allows technicians to do multiple pours of models or bases.	15 minutes	\$48.60
Quickstone Model Stones Type 3 33lb	Buff	330062	Quickstone is an economical dental stone with consistent handling properties. Its smooth creamy mix makes it ideal for a variety of lab procedures.	10 minutes	\$49.99
Orthodontic Stone Model Stones Type 3 33lb	super-white	330066	Orthodontic Stone is a hard, accurate dental stone of super-white color for optimal esthetics. Its ample working time allows the pouring of multiple models with one mix. The same smooth mixing and easy flowing properties of all Whip Mix Model Stones are retained in this product.	10 minutes	\$54.90
Laboratory Plaster Type 2 33lb	Regular	330086	An economical white plaster formulated for general purpose laboratory use. Improved to provide a creamier mix consistency. Available in both regular set and fast set.	14 minutes	\$42.20
	fast	330085			\$48.60
Snap-Stone IType 4 - 11 lb	Pink / Fast	23698	Snap-Stone is an exceptionally fast setting stone with an early high compressive strength, which allows separation of the cast from the impression in 5 minutes. Because Snap-Stone is fast setting, hand mixing is recommended	2 minutes	\$103.95
Mounting Stone Type 3 33lb	White / Fast	330059	A very hard, fast setting gypsum material formulated expressly for mounting casts to articulators. Its very low setting expansion prevents inaccuracies in occlusal cast relationships that result when conventional model stone or plaster is used.	5 minutes	\$79.90
FlowStone Type 4 33lb	White	330076	FlowStone produces accurate, bubble-free bases without vibration, making it ideal for use with base formers. Its extended working time allows the pouring of multiple bases with one mix.	12 minutes	\$84.20

Cera-Fina

Carbon-free fine grained phosphate investment for high fusing alloys.

Extremely fine texture results in accurate castings with very smooth surfaces

Extended working time, as much as 10 minutes, allows the investing of multiple flasks

Absence of carbon assures compatibility with all casting alloys, especially Palladium and non-precious

Increased liquid to powder ratio yields a creamier mix and allows better flow, resulting in bubble-free castings

Powder Env 60gm 144/Ca SKU 05134 \$258.20

Powder Env 90gm 144/Ca SKU 05142 \$320.40

Special Liquid 1 Liter SKU 02194 \$59.00



Gypsum remover.

1GallonSKU 27014 \$99.50



Gypsum Hardener

1Gallon 09725 \$79.30

Pumice Polishing

Dazzle Pumice 10 lb

SKU 32671 \$64.20

CL-60 Coarse Polish 20lb

SKU 03433 \$94.20

CL85 Medium 20lb

SKU 03433 \$92.80



Smoothex Debubbling Solution

A surface tension reducing liquid for treating patterns to permit better adherence

and flow of investment. Also excellent for treating synthetic impressions

(Polysulfide, Silicone, or Polyether) before pouring casts.

3.75 L/1 Gallon SKU 12912 \$420.10

1L/34 oz SKU 29394 \$122.80



MainStay™ Single Pin Design

Package of 1000

SKU 08236 \$295.20



MainStay™ II

Dowel pin system.

SKU 08240 \$295.20



Foilcote Liquid Foil Substitute

When applied to plaster or stone, it seals the pores and forms a smooth surface that

gives excellent separation of the denture from the mold. Eliminates the time-

consuming tinfoiling and resulting creases.

3.75 L/1 Gallon SKU 09709 \$99.20



P.D.Q. Prep Dies Kit

A complete system for preparing dies.

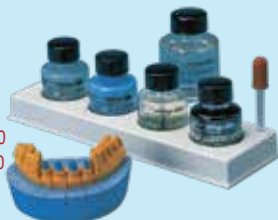
Complete P.D.Q. Kit SKU 10839 \$154.20

P.D.Q. Hardener 14ml/0.5 oz. SKU 10626 \$38.45

P.D.Q. Spacer Blue 14ml/0.5 oz. SKU 10790 \$46.20

P.D.Q. Spacer Grey 14ml/0.5 oz. SKU 10804 \$46.20

P.D.Q. Lubricant 14ml/0.5 oz. SKU 10812 \$18.20



Life-Like Presentation Wax

A white enamel-like wax that makes a more aesthetic case presentation.

The hardness of Life-Like Presentation Wax assures easy carving

properties and additions can be made with perfect blending.

Its opacity is sufficient to hide colored die stones even with

thin laminate veneer waxups. The Life-Like Presentation

Wax wax-up also aids in the fabrication of temporaries.

Box of 12 Sticks 28 gram (1 oz.) SKU 03875 \$52.10

Covered Tin 42 gram/1.5 oz SKU 04359 \$52.10



InStep Scannable

Carving Wax Beige 1.5 oz.

Provides visual discernment of anatomy

Solidifies quickly

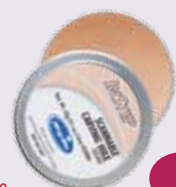
Visual cue when ready to carve

Melts at higher temperature than formers/sprues and lower than dip wax

High polish-ability

Cuts cleanly without stickiness or tackiness

SKU 03886 \$39.99





VPMmini Vacuum Mixer with Stand

99 custom programs
Compatible with VPM2 mixing bowl drive nuts
Can be wall-mounted or stand-mounted
Strong vacuum holds bowl in position
Comes Complete with 500 mL Vac-U-Mixer (item no. 29345)
Compatible with all VPM2 Vac-U-Mixers
SKU 29400 **\$2,780.00**

The Heat Zone

Flameless induction instrument heater.

Heats wax tools fast without flame.
No carbon deposits on instruments or on wax ups.
Energy efficient as power is used only at the moment of heating. No gas lines required, making unit mobile and operational anywhere an electric outlet is available. Indicator light glows green for ready mode and red for when in use.
Safety light blinks when instrument is left in too long
Replaceable inserts keeps unit clean of wax residue (5 included)
Two Year warranty SKU 10147 **\$616.99**



12 Inch Model Trimmers

The 12" model features a fully adjustable work table with angle ranges from 85 degrees to 120 degrees from the grinding wheel surface.
A hinged front cover, held by a single wing nut, allows easy access to change or reverse the abrasive wheel. A full radius water supply provides effective abrasive surface cleaning, while removable clean-out plugs provide access for general cleaning.
Unit measures 16" wide x 17" high x 15" deep and comes with a coarse abrasive wheel (40.5 cm x 43 cm x 38 cm).
SKU 09644 **\$1,830.00**



Digital Wax Carving Pencils – Dual

Easy to use.
Excellent heat conductivity.
Long service life.
Easy-to-use, visible control buttons.
Two-line circuit, designed for simultaneous work.
Minimal temperature deviation.
Accurate temperature maintenance with reset function.
Built-in digital CPU circuit accurately maintains desired temperature.
Digitally displays temperature in either Celsius or Fahrenheit.
Previous working temperature is kept in memory, even if the unit has been turned off.
Usable with AC100-240V without additional adjustment.
Silicon handle reduces hand fatigue.
Convenient magnetic cradle on surface or external cradle.
Translucent compartment in rear of unit for easy storage of carving tips.
Comes with 6 waxing tips (Offset Explorer, PKT 1, PKT 2, Discoid, Mini-Beaver Tail, Beaver Tail)
SKU 10150 **\$673.99**



2000 Series Articulators

Interframe spacing of over 4" allowing for easy mounting of even the bulkiest casts
Excellent options for orthodontists and oral surgeons
Rounded edges and frame corners for enhanced visibility and posterior access
Open fossa design
Adjustable condylar inclination: 0-70°
Fixed intercondylar distance: 110mm
Positive centric latch
02267**\$1356.99**



4000 Series Articulators:

Elimination of crossbar allows for enhanced visibility and lingual access during denture set-up
Easy-to-operate locking mechanisms allow:
Positive centric locking
Ability to move through excursive movements. Removal of upper member
Adjustable condylar inclination: 0-70°
Adjustable progressive side shift: 0-25°
Fixed intercondylar distance: 110mm
. 02276.....**\$1516.99**



Facebow with Quick Lock Toggle 9155Q

Indirect mounting for easier access, increased stability, greater ease of use and optimum instrument efficiency
Detachable QuickLock Toggle (QLT) allows you to use the facebow on the next patient
The QLT helps prevent rotation of the bitefork and captures the patient's bite record by tightening one knob
34344.....**\$956.99**



THE NEW MV-R Call for pricing

The optimal combination of proven technology and future-oriented innovations
Due to significant further development of our heating technology, we have achieved a heating rate of up to 200°C/min and can thus meet our customers' demands for shorter sintering times. On more than 200 program positions any sintering program can be displayed, each with 10 possible programming levels.
The clearly designed touch display guides you through the individual menu levels in simple steps and enables fast programming of the individual material parameters. The USB data interface allows quick installation of device updates and readout of error analyses.

40 single crowns or sintering disc Ø 100mm
High purity molybdenum-disilicide heating elements PRO
Thermocouple PtRh-Pt, Typ S
Maximum temperature 1650°C
Program control (7"-Touch-Display, USB data interface, capacity 200 programs / 10 stages)
Service programs - (Temperature control*, purge heating chamber, regenerate heating elements) *only in conjunction with MV test-Mit
Temperature accuracy at 1500°C +/-1°C
Timer function
Heating Stand-By
Error diagnosis via QR code
Controlled device cooling
Linear cooling

PREHEATING FURNACES KMP7 Call for pricing

Laboratory furnaces by MIHM-VOGT embody quality, longevity, and precision. Our high-performance appliances have undergone constant further development for many years. By continually optimising the laboratory devices technically, including the associated accessories, we ensure that they are always up to date in respect of the requirements and demands imposed by modern laboratories. In this category we present our pre-heating furnaces, exhaust hoods, as well as catalytic converters, fume extractors and intermediate fans.

Maximum temperature 1150 °C
Thermocouple PtRh-Pt, Type S
Individually controlled outlets for additional devices
Timer function
Reliable, individual and always up to date: Laboratory furnaces by MIHM-VOGT
Electronic microprocessor-based controller P7;
Precise digital temperature regulation, up to four temperature levels (four holding times and ramps each);
30 individual programs with the entry of short texts can be stored;
Linear heating rate of 1 to 30 °C/min, separately selectable for each level;
Heating on all four sides;
Cast-time function;
Programmable switch-off temperature for steam extractor, catalyst or extraction hood;
Comprehensive four-line LED display.



PRICE BEAT GUARANTEE
Find a lower priced identical item &
We'll beat it by 10%
Excludes Bulk Pricing & Coupons
Price Includes Delivery



IMPAK-PF (Pink-Fibered) "NEW" FOR HYBRID DENTURES

- Hybrid Denture – Traditional hard acrylic for denture teeth matrix, IMPAK-PF for soft, flexible flanges
- Stabilized Lower Full Dentures – Engage previously unusable posterior lingual undercuts
- Pink-Fibered – Matches popular hard acrylic shades
- Excellent Bond – Adheres well to traditional acrylics
- Adjustable Softness – Alterable powder/liquid ratio
- Added Comfort – Minimal Patient Adjustment Period
- Economical Start-Up – No special equipment needed

IMPAK Transparent MOUTH GUARDS & HARD BITE SPLINTS

- Time-Tested – Over 900,000 appliances fabricated
- Economical Start-Up – No special equipment needed
- Adjustable Softness – Alterable powder/liquid ratio
- Excellent Bond – Adheres well to traditional acrylics
- Reduced Labor – Minimal adjustment to fit master
- Reduced Chair Time – Little or no DDS adjustment
- Patient Comfort – Effortless, pain-free insertion
- Everlasting Fit – Soft retention for easy repositioning
- Athlete Safety – Custom fit & comfort for all activities



**SPECIAL
OFFER**
limited time

HEAT-CURED	SUB-DESCRIPTION	UNIT	Price
8101	PINK-VEINED 1LB (454G) POWDER ONLY - NOBILTONE HIGH IMPACT	POUND	\$57.23
8102	PINK-VEINED 5LB (2.27 KG) POWDER ONLY - NOBILTONE HIGH IMPACT	PACKAGE	\$238.42
8103	PINK-VEINED 25LB (11.4 KG) POWDER ONLY - NOBILTONE HIGH IMPACT	PAIL	\$991.87
8104	8 OZ (237 CC) LIQUID ONLY - NOBILTONE HIGH IMPACT	PACKAGE	\$31.52
8105	33.8 OZ (1 LITER) LIQUID ONLY - NOBILTONE HIGH IMPACT	LITER	\$48.99
8106	135.3 OZ (4 LITERS) LIQUID ONLY - NOBILTONE HIGH IMPACT	GALLON	\$175.94
8131	PINK-VEINED 1LB (454G) POWDER ONLY - NOBILTONE HEAT-CURE	POUND	\$68.85
8142	DARK PINK VEINED 5LB (2.27 KG) POWDER ONLY - NOBILTONE HEAT-CURE	PACKAGE	\$171.55
8134	8 OZ (237 CC) LIQUID ONLY - NOBILTONE HEAT-CURE	PACKAGE	\$29.68

POURABLE	SUB-DESCRIPTION	UNIT	Price
8171	PINK-VEINED 1LB (454G) POWDER ONLY - NOBILTONE POURABLE	POUND	\$49.70
8172	PINK-VEINED 5LB (2.27 KG) POWDER ONLY - NOBILTONE POURABLE	PACKAGE	\$181.19
8173	PINK-VEINED 25LB (11.4 KG) POWDER ONLY - NOBILTONE POURABLE	PAIL	\$715.11
8174	8 OZ (237 CC) LIQUID ONLY - NOBILTONE POURABLE	PACKAGE	\$58.93
8175	33.8 OZ (1 LITER) LIQUID ONLY - NOBILTONE POURABLE	LITER	\$110.62
8176	135.3 OZ (4 LITERS) LIQUID ONLY - NOBILTONE POURABLE	GALLON	\$324.34

IMPAK	SUB-DESCRIPTION	UNIT	Price
3347	1LB (454G) POWDER ONLY - IMPAK TRANSPARENT	POUND	\$106.20
3305	6LB (2,72 KG) POWDER ONLY - IMPAK TRANSPARENT	PACKAGE	\$450.00
3307	25 LB (11.4 kg) POWDER ONLY - IMPAK TRANSPARENT	PAIL	\$1780.50
3348	11 OZ (325 CC) LIQUID ONLY - IMPAK TRANSPARENT	PACKAGE	\$44.20
3306	1 QT (946 CC) LIQUID ONLY - IMPAK TRANSPARENT	LITER	\$70.25
3310	0.5 GAL (1.98 LTR) LIQUID ONLY - IMPAK TRANSPARENT	GALLON	\$132.68
3311	1LB (454G) POWDER ONLY - IMPAK Pink Fibered	POUND	\$122.40
3312	6LB (2,72 KG) POWDER ONLY - IMPAK Pink Fibered	PACKAGE	\$594.20
3314	11 OZ (325 CC) LIQUID ONLY - IMPAK Pink Fibered	PACKAGE	\$43.03
3316	1 QT (946 CC) LIQUID ONLY - IMPAK Pink Fibered	PACKAGE	\$61.34

Foredom K.1050 Brushless Kit, High Torque and

Two Year Limited Warranty

Brushless motor design carbon brushes NEVER need changing
Maximum Torque or Watts Output 10 oz. in or 70mNm or 230W.
Powerful even at minimum speeds

Sealed housing eliminates dust, noise, and vibration
Additional port for Brush Type Micromotor Handpiece:

This brushless micromotor is ideal for various applications at high, medium and low speed.

High Speed Applications: Running at high speed, it provides smooth, clean, and sharp detailing in metal and wood. It's also great for bright-cutting, grinding, finishing, texturing, and polishing.

You never need to change the brushes on this handpiece. Medium Speed Applications:

At medium speeds it is ideal for effortless and fast stock removal in wood, diestone, or acrylics.

Low Speed Applications: The low end offers extra control and power for stone setting and milling.

SKU K.1050 \$1,465.85



K.1040 High Speed Rotary Brushless Micromotor

Two speed settings:

Setting 1 – Full speed range up to 50,000 RPM.

Setting 2 – 500 RPM – 5,000 RPM.

Maximum Torque – (11.3 oz-in / 8 N-Cm) or 160 Watts Output Power

Sealed housing eliminates dust, noise, and vibration

Two Year Warranty

UKCA and CE marked, double insulated

K.1040..... \$1,168.99



K.1070 Foredom High Speed Rotary

For high speed applications up to 38,000 rpm including light deburring of cast piece

The control converts AC current to DC current required for the handpiece. Compared to flexible shaft machines, micromotors have less torque, however, their higher speed results in a comparable rate of material removal with a lighter touch.

SKU K.1070 \$654.95



Red Wing Lathe

Red Wing® motors are made in the U.S.A.

Precision turned shafts made of alloy steel and double shielded ball bearings insure the smooth movement of shafts.



Name	SKU	Price
16B Chuck-Changer	16B	\$1,290.10
16B-1 Chuck Changer	16B-1	\$1,495.10
26 Red Wing Lathe	26	\$769.20
26A Red Wing Lathe	26A	\$655.99

2010DCU Two Stage Digital Denture Curing Unit

2-Stage curing unit with a digital control panel on which sequences of polymerizing times and temperatures can be programmed as required by user. The time of each step can be set between 0 and 999 minutes. The end temperatures at each plateau can be regulated by the user between 32oF and 210oF (0oC and 99oC). To enable the user to see the actual program status at all times, the curing unit has a synoptic display. Programming. It is extremely easy to program a heating sequence for the water in the tank. Low maintenance and easy cleaning.

SKU 2010DCU \$5,390.10



55VF Vacuum Former

- Reversible vacuum tray to manage multiple applications.
- Container of stainless steel beads.
- Easy to operate design.
- 750 watt symmetrical heating element heats the material quickly and evenly.
- Heat insulation design is safe for the user, and cooler to the touch on the top cover.
- Ergonomic handle lift requires one hand to operate.
- The no twist top makes the operation smoother and easier.
- When you bring down the heated material, the unit activates automatically.
- Stainless steel bearing blocks on the head assembly allow for smooth up and down motion.
- Spring Action handle for easy open and close of the tray.
- Uses all types of 5" x 5" resin sheets.

SKU 55VF \$1,014.90



78-RK Atlas Heavy Duty Tri-Speed Vibrator

The NEW Handler 78-RK Heavy Duty Vibrator is built for durability and rugged use. The newly designed 78-RK has two frequencies each with variable speed. The HIGH and LOW are variable to allow a technician to vibrate a mixing bowl or flask at the correct speed for the plaster, stone or viscous solution to de-bubble.

SKU 78-RK \$495.99



86D Splash Hood

New and improved sleek design

Sturdy steel welded construction

Attractive white textured powder coated finish

Steel insert pan - slides out for easy cleaning

Bright, long lasting LED light with side mounted on/off switch

Large, adjustable protective safety shield prevents splashing

Rubber padded bottom for safety to prevent slipping and movement during procedures

Comes fully assembled

SKU 86D \$264.99



31 Model Trimmer

The Professional™ A 10" [25cm] diameter model trimmer powered by a full 1/3 HP ball bearing, capacitor start motor. Features include a swing-open front housing for ease of cleaning and wheel changing, internal gutter to facilitate water runoff, full wheel radius water spray for efficient wheel cleaning, drain trough which completely surrounds the model tray to prevent water leakage, large 1" [2.5cm] diameter water exhaust and motor cover. Unit shipped complete, ready to use with minor set-up. Finished with a durable, baked coating.

SKU 31 \$1283.99



81C PLASTER BIN

A three compartment plaster bin which may be hung on the wall or placed on a benchtop. The 81C is manufactured of heavy gauge sheet steel and finished in a durable, baked warm-gray finish. Each compartment of this plaster bin is built to hold 25 lbs [11.3 Kg] of stone or plaster.

SKU 81C \$318.26



86J-1 Polishing Hood

Made of stylish durable resin molded material.

Dimensions: 11"Wx16"Hx15 1/4"D.

3" suction inlet at bottom rear.

Equipped with two light sockets and cords.

SKU 86J-1 \$358.97



A-10080 Rotating Bur Holder

Stores and organizes 126 all size accessories including 1/16", 3/32", 1/8" and 1/4" shanks.

SKU A-10080 \$40.95



8 QT PNEUMATIC PRESSURE POT

Made of sturdy cast aluminum The new 448PP pressure vessel is built to provide 20 psi pressure* – while the acrylic resin is curing – forming a dense crosslinked repair for the dentist and patient.

SKU 448PP \$574.99



52PAB Air Brush Kit for sandblasting with aluminum oxide

52PAB is an air brush starter kit for sandblasting using aluminum oxide.

The kit comes with the sandblast pencil, a short length of hose to connect to the air compressor, a small jar of aluminum oxide material and a mask for safety

SKU 52PAB \$419.95



Powerful Dental CAD Software

Special plan to train modules included in the fees

Perpetual License		Core Lab Version	Advanced Lab Bundle	Implant Lab Bundle	Ultimate Lab Bundle
List price (RRP)	Price per license (including 1 year upgrade contract)	\$7241	\$8262	\$10692	\$16183
	Price upgrade contract per year (from year 2)	\$1181	\$1485	\$2076	\$3358
Flex License		Core Lab Version	Advanced Lab Bundle	Implant Lab Bundle	Ultimate Lab Bundle
List price (RRP)	Initial fee (for year 1)	\$4455	\$4989	\$5864	\$8634
	Yearly fee (from year 2)	\$1536	\$2193	\$3240	\$4978



With DentalCAD, the choice is yours: Easily and seamlessly integrate our powerful dental CAD software solution with all exocad products and modules in one seamless digital workflow. Exceptional usability, performance and flexibility are guaranteed. Thanks to its open and vendor-neutral software architecture, you can use DentalCAD with your existing equipment, such as any open scanner, 3D printer or milling machine. With DentalCAD, you control the desired workflows. Expand your portfolio with our wide range of add-on modules and improve collaboration with clients and service providers alike – for reliable results that are cost- and time-efficient.

Pricing Add-On Modules for DentalCAD		Perpetual License	
Add-on-module		Price per license	Price for upgrade contract per year
	Implant Module	\$2700	\$321
	Virtual Articulator	\$1344	\$135
	Jaw Motion Import	\$1247	\$135
	Bar Module	\$2700	\$321
	Model Creator	\$3290	\$321
	Smile Creator	\$2362	\$270
	Provisional Module	\$1085	\$118
	DICOM Viewer	\$1053	\$135
	Bite Splint Module	\$2700	\$321
	TruSmile Module	\$1085	\$135
	FullDenture Module	\$3291	\$623
	PartialCAD Module	\$3291	\$623
	ZRS Tooth Library	\$955	included
	xSNAP Module	\$648	\$129
In-CAD Nesting		\$456	\$135
Nesting (includes In-CAD Nesting)		\$1012	\$202

Flex License (subscription-based)	
Initial fee (for year 1)	Yearly fee (from year 2)
\$680	\$472
\$356	\$243
\$356	\$243
\$680	\$472
\$843	\$599
\$1012	\$712
\$356	\$243
\$371	\$270
\$745	\$534
\$356	\$243
\$1198	\$675
\$1198	\$826
\$356	\$0
\$291	\$291
\$259	\$210
\$506	\$353



FREE SHIPPING IN CANADA
Some conditions may apply

exceldentalshop.com

604-876-2600



Pro-Form Mouthguard Laminates

Our Pro-Form® Mouthguard Laminates are the only pre-made laminated mouthguard material in the industry, and are widely used by leaders in custom-made mouthguards. By laminating two layers of soft EVA together, the laminate has excellent tensile strength. All of these features make the Pro-Form mouthguard laminate the material of choice for custom-made mouthguards.

.160 (4mm) 5" x 5" (127x127mm) 12/Pkg \$109.95

White	Yellow	Orange	Red
9601020	9601040	9600850	9600910
Pink	Maroon	Purple	Blue
9600886	9600820	9600870	9598060
Green	Black	Clear	Assorted
9600800	9598730	9596920	9600180



Bleaching Material Soft EVA

Keystone Industries' Soft EVA is great for the fabrication of customer fluoride trays, bleaching trays and model duplication. The material is soft, clear and forms easily. The material can be trimmed effortlessly and is ideal for soft bruxing patients. 25/Pkg

.040 (1mm) 5" x 5"	.060 (1.5mm) 5" x 5"	.080 (2mm) 5" x 5"
9596980	9597090	9597150
\$37.50	\$47.20	\$48.10



Pro-Form Niteguards

Our Pro-Form® Niteguards are layered with soft/soft material, made specifically for the making of niteguards. The layering gives the thermoplastic a more abrasion-resistant characteristic that will withstand grinding better than traditional soft sheet materials.

.120 (3mm) (5" x 5") - 12/Pkg 9602550 \$115.80



Lingual Bar – Stainless Steel,

12/Pkg Lingual Bars are used for fabricating Gelb TMJ splints, bruxism appliances, lingual arches and partial dentures. The cut-out ends afford positive retention.

Small	1110040	\$21.40
Medium	1110030	
Large	1110020	
Extra Large	1110010	



Scotch Brite Brush

around 5,000 rpm 12/Pkg

Coarse	1670016	\$32.15
Fine	1670091	
Medium	1670092	



C&B Box Blue/Clear Rigid

500 /pk

1 inch	2 inch
9571445	9569906
\$174.50	\$189.20



Foam Filler

1000 /pk

2 X 1/2 Blue	2 x 1/4 Blue	1 X 1/2 Blue	1 x 1/4 Blue
9569380	9569420	9570790	9570870
\$89.10	\$89.10	\$49.85	\$49.85

Thowax Sculpturing Wax, 70 g Tin

Excellent sculpturing characteristics due to ingredients with extremely short molecules
Quick cooling down facilitates rapid working
Solidification point of 57°F (3°C) allows a drawing of the wax and the sculpturing of even the smallest details

Grey	1860016	\$61.99
Beige	1860018	
Blue	1860017	



Fastray™ LC Custom Tray Material, 50/Pkg

Fastray™ LC is a light-cure, custom tray wafer material supplied in preformed sheets that will not distort or stick to fingers or models. When cured, material provides a firm, stable custom tray (no flex) that is ready to use immediately after trimming and polishing.

- No powder and liquid mixing – eliminates odors
- Reduced procedure time
- Works great in Triad® machine

SKU 0921406 \$205.10

Pink	Blue
0921406	0921405
\$205.10	\$205.10



Machine III Vacuum Forming 110 v

- Easy-to-use system
- Uses 5"x5" resin sheets
- Symmetrical heating system
- Lightweight, rust-free aluminum frame
- Made in the U.S.A.
- 5-year guarantee on parts and labor

SKU 7000330 \$693.99



Pressure Dome

The Pressure Dome uses positive pressure during vacuuming, allowing for a form-fitting mold of thermoplastics. The Pressure Dome hooks into any existing air compressor lines (needs 80 PSI line pressure with 3/8 line) to provide extra pressure when adapting thermoplastics over an existing model. It will fit over any vacuum unit that makes 5"x5" plastics. Works great for making laminated mouthguards, heavy-duty splints, hard/soft dual laminated splints, Proflex base plates, model duplication, orthodontic retainers and more.

SKU 9594050 \$230.99



Pressure Pot Hydraulic Water Press

Our Pressure Pot Hydraulic Water Press is used in creating high quality relines, repairs, splints, temporaries, and orthodontic appliances. The Pressure Pot Hydraulic Water Press guarantees a dense, super-smooth, color stable on any self-curing acrylic with just 10-15 p.s.i. Creating a temporary with the Pressure Pot Hydraulic Water Press increases strength by reducing voids and porosity.

SKU 092135 \$410.00



Heavy Bnded Arbor Bands 3/4 . 100/Bx

SKU 1090370 \$24.10



Ultra-thin Disc

These abrasives are used for fine cutting and finishing on porcelain interproximals and margins.

SKU 1300470 \$23.99



Deluxe Magnetic Articulator

The Deluxe Magnetic Articulator comes with magnetic split casting to ensure easy removal and exact settings of models. This articulator is excellent for checking cases. It's completely interchangeable, lightweight and Teflon coated. Also available are Magnet F/Deluxe in 4/Pkg and Curved Disc Deluxe Magnet Articulator.

Curved Disc for Deluxe Magnetic Articulator 1050077 \$3.49

Magnet F/Deluxe Mag Art - 4/pkg 1050076 \$20.99

Deluxe Magnetic Articulator 1050075 \$114.99



Luxury Deluxe Articulator

Our Luxury Deluxe Articulators still offer the finest quality while remaining at an affordable price. This Luxury Deluxe Articulator is a four-piece magnetic mounting disc set with two plastic steel mounting magnet plates. There is a curved plate, a flat plate and long incisal and central pins. The mount is backed with black Teflon coating.

The articulator is easy to clean.

Luxury Deluxe Articulator 1050085 177.99

4 Piece Insert For Luxury Articulator

1050001 \$18.99



Keystone Plasterless Articulator

The Keystone Plasterless Articulator is simple to operate while still maintaining a high quality without plaster. Simply mount the model using the clamping set bolts, which allow for easy attachment and detachment from the articulator.

1050150\$657.99



Precision Articulator

The Precision Articulator is great for transferring mounted cases between the same articulator without the loss of accuracy.

- Indexed magnet mounting plates
- Includes 6 additional magnets
- 0, 10 and 20 degree tables available
- It also includes six additional magnets

1050100.....\$130.99



LAB WORK PAN BLUE 12/pk

– Size: 7" x 5" x 2-1/2" (177.8 x 127 x 63.5 mm)

BLUE	7000371	\$54.20
Green	7000375	
white	7000374	
Yellow	7000373	



Laboratory Etching Gels 15ml

Ceramic	Metal
5920840	5920850
\$39.95	\$39.95



Waterproof Model Trimmer Discs

These superior quality coated abrasive discs will cut models three to four times faster than most discs.

12" Disks 4/pk	10" Disks 6/pk
1900690	1900650
\$54.80	\$62.20



SILENT powerCAM TC

Extraction unit for CAM systems
Powerful and inexpensive CAM extraction unit with collector motor, especially suitable for medium to large CAM systems.
Consistently full suction power due to automatic filter cleaning.
Reliable production process through innovative motor technology (3x longer service life in comparison to conventional collector motors).
High suction capacity up to 3980 l/min.
SKU 29391000 **\$4,420**



POWER steamer 2

Steam cleaning unit with automatic filling
The new, powerful POWER steamer 2 sets new standards in reliability and durability and impresses with its outstanding cleaning performance.
- Particularly durable heating system – the heating element is cast inside the floor of the boiler to protect it against water, limescale, and the chemicals used during cleaning.
- High functional reliability and dependability thanks to a real-time calcification indicator.
- Simple cleaning of the pressure tank thanks to an extra-large service opening.
- Continuous and effective cleaning performance thanks up to 2,000 W and 4.5 bar working pressure in combination with innovative steam nozzle technology.
SKU 18461000 **\$4,380**



Millo pro

Dental arch trimmer 120V
Safe processing even with difficult dental situations due to the height-adjustable cutter.
Uncomplicated cutter change using the integrated tool key.
Direct connection point for a suction unit without automatic switch-on function
SKU 18051000 **\$1,499**



Waxelectric II

Electric wax knife
Waxelectric II is the professional device in the electric wax knife range which can be operated with two handpieces simultaneously.
Integrated holders provide ergonomic access to the handpieces and exchange tips.
Direct setting of the maximum or minimum temperature.
Daylight operable 3-figure LED display.
Both channels can be set separately with the Waxelectric II.
Color-coded for controlled management of the handpieces.
SKU 21571000 **\$689.20**



Basic eco

Fine sandblasting unit
Great cost efficiency through special mixing chamber technology (Venturi-Principle).
Precise sandblasting due to excellent illumination of the blasting chamber with LED technology
25-70µm/70-250µm, 120 V Fine sandblasting unit.
SKU 29494025 **\$1390.10**



Power pillo

Deflasking chisel
With great running smoothness, laboratory-fabricated restorations are gently, quickly and easily deflasked using the Power pillo.
SKU 50225000 **\$874.99**



Vortex compact 3L, 120 V

Wet and dry extraction with high suction power and durable collector motor for devices with high dust generation.
SKU 29246000 **\$1,399**



Cobra

Abrasive
This abrasive contains one of the hardest materials: aluminium oxide (Al₂O₃).
Extremely sharp-edged.
Low to very high abrasive effect dependant on size.
Extremely pure – approx. 99.7% Al₂O₃.



Name	Weight	SKU	Price
Cobra, 50 µm	27.6 lbs.	15941112	\$179.90
Cobra, 50 µm	11.04 lbs.	15941205	\$78.80
Cobra, 110 µm	27.6 lbs.	15831012	\$179.90
Cobra, 110 µm	11.04 lbs.	15831005	\$78.80

Kolinsky

Natural bristle brush
Natural bristle brush made from Kolinsky red sable
bristles – quality and aesthetics combined
Fine, flexible brush tip.
Optimum liquid reservoir.

Size	SKU	Price
size 1/0 - pk/2	17131110	\$58.10
size 1 - pk/2	17131001	\$68.80
size 2 - pk/2	17131002	\$78.20
size 4 - pk/2	17131004	\$109.10
size 6 - pk/2	17131006	\$145.20
size 8 - pk/2	17131008	\$232.10



GEO Classic

Modeling and Special Waxes
High precision due to coordinated flow and modeling properties.
Flexible working as it is suitable for using the electrical wax knife and the Bunsen flame.
Processing safety in full and press ceramic techniques due to the fact that it is an organic, transparent modeling wax which burns-out residue-free
75 g **\$39.10 Each**

Beige	Grey	Snow White	Bordeaux
4950100	4950200	4990101	4861000
Mint	Natural	Red	Blue
4950300	4990300	4891000	4851000



Bi-V-Pin

Model pin
Model pin with a narrow V-shaped head geometry and two guide pins, particularly suitable for tight positioning in limited space.
Only one hole drilled per die.
Reduced model production time.
PK/1000

metal sleeve	plastic sleeve
3282000	3292000
\$359.10	\$265.20



Waxelectric Tip

Tip small	Tip medium	Tip large
21550101	21550102	21550103
\$76.20	\$76.20	\$76.20



FREE SHIPPING IN CANADA

Some conditions may apply

ProBase Hot & Cold

Complete denture prosthetics
Partial denture prosthetics
Implant prosthetics
Relines of dentures
Repairs
Occlusal splints
Orthodontic appliances



Kit Includes:
- Monomer 500ml
- Polymer 1000g
- 1 polymer measuring cup
- 1 monomer measuring glass
- 1 mixing cup/top
- 1 spatula
- 1 polymer container

Standard Kit	Color	Liquid	Standard Kit
Cold	Clear	531495AN	\$240.99
Cold	Pink	531492AN	\$234.99
Cold	US-P	531497AN	\$241.10
Hot	Clear	531466AN	\$166.99
Hot	US-L	531793AN	\$168.99
Hot	US-P	531794AN	\$174.20

Separating Fluid

Separating Fluid optimally isolates all Ivoclar Vivadent denture base materials and ensures smooth surfaces.

1 L	5 L
530349	530350
\$49.38	\$169.60



Sil-Tech® VPS Impression Material,

Putty Standard Package with 60g Gel
High shore hardness
Fast setting
Elastic
Heat resistant
SKU 563051AN **\$110**



Gingitech Refil

SKU 563053AN **\$84.20**



Gingitech Dispenser

SKU 563054AN **\$148.76**



X50 Brushless Electric Lab Handpiece System 120V AC

- Premium 50,000 RPM High Torque System
 - Ultra-High Torque Cutting Power
 - New Whisper-Quiet Motor
 - New Advanced Console Design with Microcomputer Control
 - Foot Control "Smart Cruise"
 - Heavy Duty Construction
- SKU 37800 **\$1,899** **\$1,699**
Save \$200



Sta-Vac II Vacuum Former, 120V AC, w/2 ConverTable Tables

- Improved Classic High Performance Vacuum Forming System that Allows
 - Both Traditional Flat Table and Accurate Bead Basket Adaptations
 - Versatile New ConverTable™ Combination Vacuum Table and Bead Basket
 - High Performance Electric Vacuum Forming System
 - Accurate Frame and Alignment System
 - Heavy Duty Construction
 - Convenient and Safe Design
- SKU 80193 **\$1,560** **\$1,400**
Save \$160



Dust Containment Unit (D.C.U), 120 V AC

Enhance safety for you and your assistant with the new Buffalo Dental Manufacturing Dust Containment Unit. The D.C.U for short, is an enclosed unit featuring an internal light, suction fan and filter system that will allow you to use the included V35 Handpiece System in a more sanitary and safe environment.
SKU 36800 **\$1,499** **\$1,399**
Save \$100



Optiblast II™

Abrasive micro-sandblasting is a popular procedure used in the dental lab for increasing bonding strengths prior to repairing or cementing restorations. Treatment with the Optiblast II prior to bonding can increase the surface area of metals, porcelains, and composites up to 400% and greatly increase the resultant bonding strengths. The non-recirculating design also makes quick and easy work of everyday micro cleaning and roughening tasks in the lab.
SKU 36700 **\$299.99**



MOLLOPLAST-B

MOLLOPLAST-B is an industry-leading heat-processed silicone material that stays soft permanently and features decades of documented success in denture reline cases. The material bonds firmly to new or existing acrylic dentures, and stays elastic and bacteria free for years.

- Single component silicone
- Heat-curing
- Easy to use with dental flasks: can be polymerized either in water batch or microwave
- Strong bonding to any denture base, to new and old dentures alike
- Time saving feature: can be polymerized simultaneously with acrylates
- Resistant to the influences of the oral environment
- Contains no substances of swelling and no plasticizers
- Non-irritant, tissue-compatible, clinically tested and scientifically documented
- MOLLOPLAST-B relinings will remain soft and elastic even after years of wearing

Name	SKU	Price
Molloplast-B 45 Gm	62300	\$195.20
Molloplast-B 170 Gm	62310	\$562.10
Primo Adhesive 15 ml	73000	\$64.20
Pre-Polishers Pk/10 Wheels & 1 HP Mandrel	62200	\$79.95



Brushes, Abbott-Robinson – Straight HP Mounted-Bulk Pkg. Of 144

- Durable design features permanently attached bristles for improved performance and extended life without flaring
- Available in Soft, Standard Stiff, and Extra Stiff bristles for use in all polishing, finishing, and cleaning tasks
- Solid Carbon-Steel plated HP mandrels for excellent fit and durability

Name	SKU	Price
Robinson 11 Soft Brush	06064	\$208.99
Robinson 11 Standard Brush	06084	\$208.99





4D Zirconia Disc



14mm	16mm	20mm
Functional	Functional	Functional
Esthetic	Esthetic	Esthetic
\$150	\$160	\$170

Buy 5 Blocks &

Get **\$50 Visa Gift Card***

Offer valid 05/01/23 to 05/31/23. Cannot be combined with other offers.



VACALON

Quick Check Disclosure Indicator Spray 75 ml Bottl

Quickcheck Indicator Spray allows technicians and doctors to accurately pinpoint unwanted contact points and high spots on all dental restorations. Whether seating a crown, partial framework or locating occlusal contacts, let Quickcheck help you achieve the perfect fit every time.

- Quick instantaneous application dispenses a micro-fine layer of colored powder
- Saves time, labor and money by quickly locating trouble areas and helping to achieve a precise fit
- Over 500 applications per can
- Works in moist or dry situations
- Intraoral use permitted by the FDA
- Easily removed with a brush and water, steamer or moistened gauze

Green SKU 10050

Red SKU 10060

White SKU 10070

\$32.10 Ea



HOT-SHOT PROFESSIONAL - STEAM CLEANER

- **Fast & Powerful** - Produces 80 psi of steam in 10- 15 minutes
- **Expanded Size Professional Tank** - Stainless steel tank holds over 1 gallon (4.5 liter)
- **Large LED Information Display**
- **Selectable Steam to Meet Every Need**
- **Triple Low Water Protection System**
- **Steam Spray Jet Handle**
- **Screw-on Nozzle Tips**
- **Built-in Drain Valve**
- **Stainless Steel**

SKU 9000 ~~\$1880~~

Save \$100
\$1780



Nobel Biocare®

Tri-Lobe RP Analog (10-Pack)

SKU 9000500-10 **\$180.00**

Nobel Biocare®

Tri-Lobe WP Analog (10-Pack)

SKU 9000600-10 **\$180.00**

Nobel Biocare®

Tri-Lobe NP Analog (10-Pack)

SKU 9000400-10 **\$180.00**

Nobel Biocare®

Tri-Lobe 6.0 Analog (10-Pack)

SKU 9000700-10 **\$180.00**

Hader Ea \$64.10

Yellow Riders Standard Retention SKU 0101752-6

Red Riders Increased Retention SKU 0101754-6

White Riders Reduced Retention SKU 0101753-6



Kromopan Chromatic Alginate 1lb Pouch Fast Set Dust-free

Kromopan® is a type 1 chromatic alginate specifically studied for applications where longer working time is essential. The color-changing phase indicator (purple/pink/white) guarantees perfect mixing and timely insertion in the oral cavity.

- Indications: mobile prosthesis, removable and fixed prostheses antagonist, preliminary and study models
- Thixotropic; easy to mix and use
- Long dimensional stability (>100 hours)
- Extra-fast, in-mouth minimum setting time (30 seconds); high accuracy (20 µ)
- Compatible with alginate impression disinfectant
- Patient friendly, mint flavor; dust free

SKU KRM302 **\$16.50**

BUY 10 GET 1
FREE



CALIFORNIA AIR TOOLS Air Compressor with Drying System and Automatic Drain Valve

Ultra Quiet, Ultra Dry Oil-Free Air Compressor with Air Drying System is designed to be one of the quietest 4.0 Hp air compressors in the industry having only

75 decibels of sound

Up to 98% Dry Air

20 Gallon Steel Tank



SKU CAT-20040DCADC ~~\$5,390~~ **\$4890** Save \$500



The easiest and most innovative Dental CAM

Increase production capacity and bandwidth

Reduce milling time while maximizing tool life

Save time and cost for training and support

MillBox

Using MillBox means: Nesting operations are easier to perform.

With a minimal amount of steps needed, new users are able to be operational in a very short time with very little training. MillBox is built on a powerful CAM platform that is easy to use and that decreases time and cost, which adds to a significant return on the investment made

- MillBox is the dental CAM solution developed for milling any kind of restoration with any material
- Equipped with a simple to follow user interface that is both innovative and appealing. MillBox simplifies the nesting and toolpath creation

Call for pricing



FREE SHIPPING IN CANADA

Some conditions may apply

exceldentalshop.com 604-876-2600